

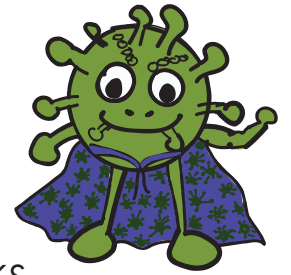


ORCHID

THE ASSAM VALLEY SCHOOL ART & DESIGN NEWSLETTER

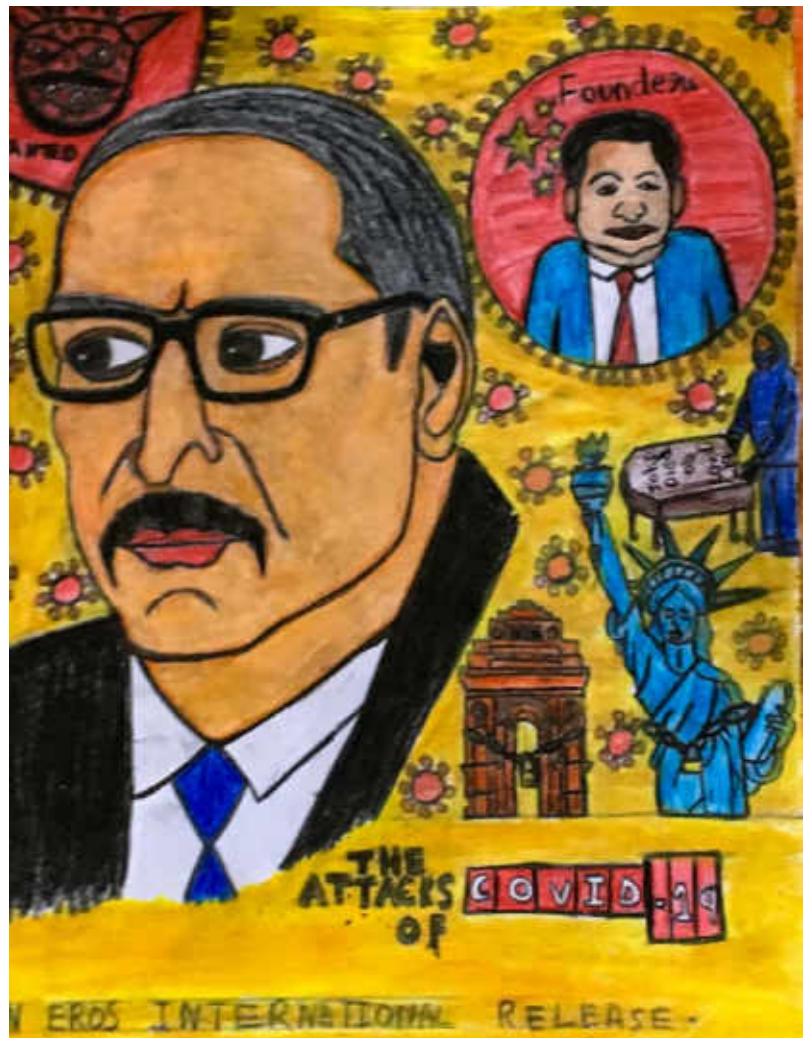
July 18, 2020 . Issue 4.6 . Colour in Theory

POSTER CORNER



STARRING CORONAYAKS

MOVIES 2020
MOVIES 2020
MOVIES 2020

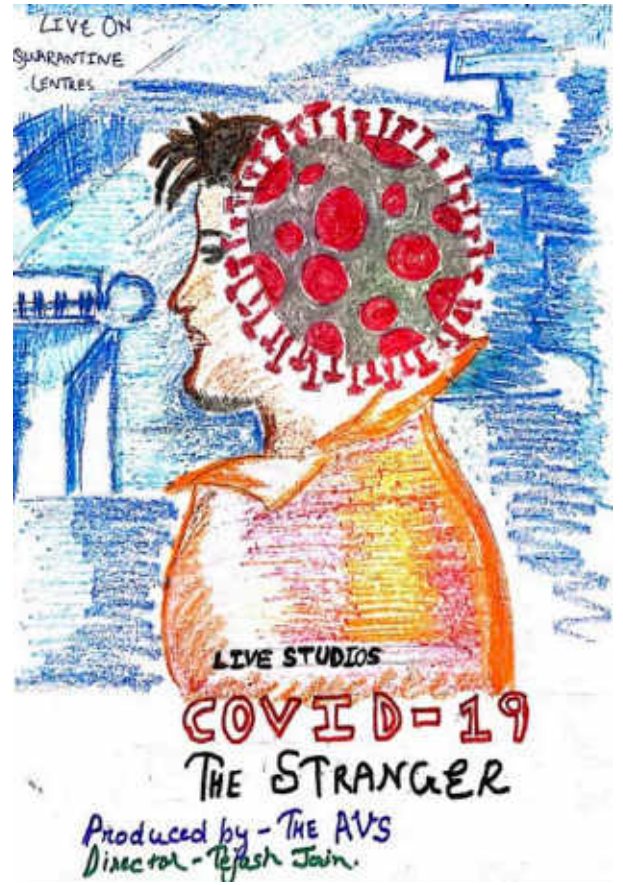


Top to bottom: L to R: Sampurnam Sarkar, Class 8. Krishna Agarwal, Class 8. Shuhail Ahmed, Class 8.
Coronicon by Anushcka Joshi, Class 11.

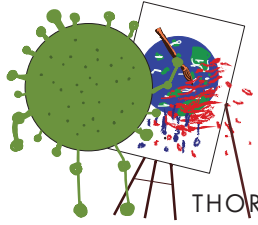
Next Page:

Top to bottom: L to R: Siddhi Gupta, class 8. Yash Agarwal, class 8. Ahsash Agarwal, Class 7. Himanshu Goenka, Class 8. Ishika Das, Class 7.
Hriday Chokhani, Ckass 8. Neil Kashyap, Class 8. Dhruv Prithani, Class 8.



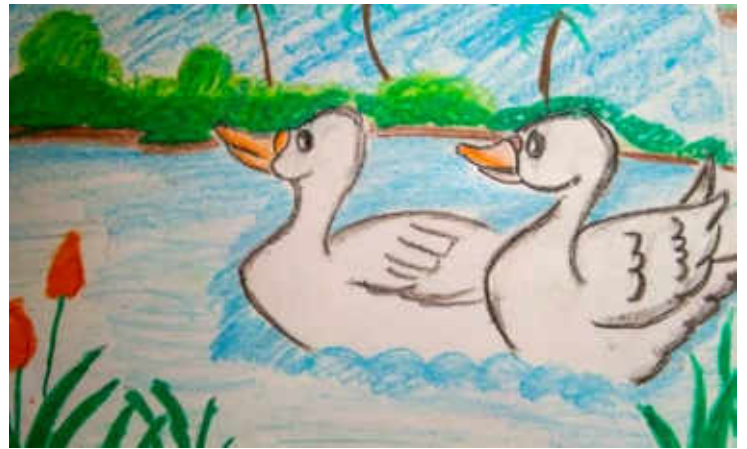


Top to bottom: L to R: Rajiyoti Talukdar, Class 8. Tejash Jain, Class 8. Himanshu Goenka, Class 8. Kashyap Tiwari, Class 7. Urvee Rathi, Class 7. Zaheen Shah, Class 7.



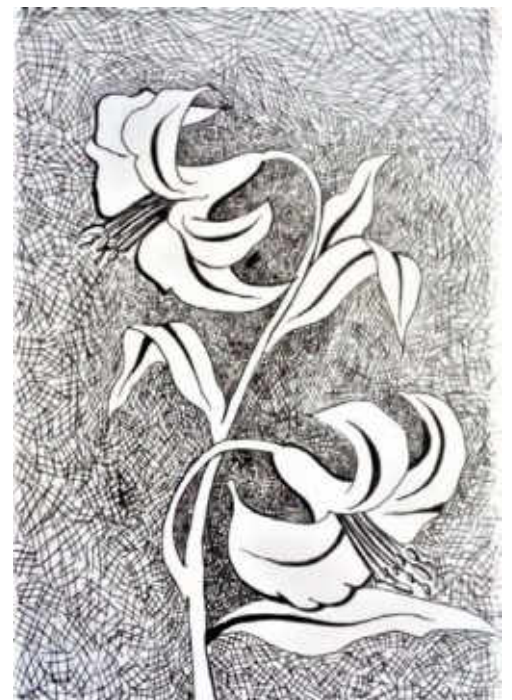
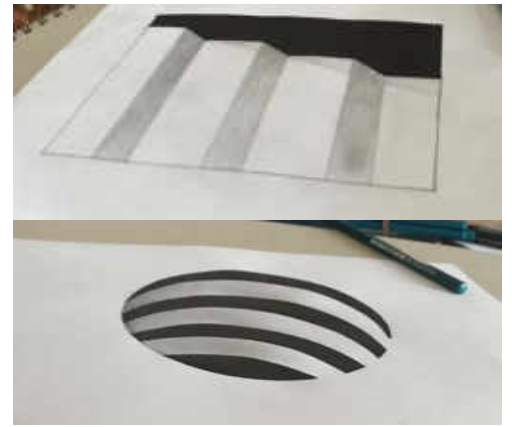
Art Showcase

THOROUGHLY WASHED IN COLOUR BY ARTIST AVIATORS



Anticlockwise R to L: Manalisa Narzary, Class 10. Saifi Raheek, Class 10. Hardik Agarwal, Class 7. Krishataj Hazarika, Class 8.

Top to bottom: L to R: Kuhu Bakliwal, Class 11. Archit Phukan, Class 6. Jivitesh Agarwala, Class 6. Shirin Jaiswal, Class 7. Nilasha Bhimsaria, class 11.



Top to bottom: L to R: Anushcka Joshi, Class 11. Thejose Epao, Class 9. Tanisha Surana, Class 10. Nilay Dhakal, Class 12. Nilasha Bhimsaria, class 11. Tanisha Surana, Class 10.



The Son of Man by René Magritte

REPAINTED IN COMPLEMENTARY COLOURS

The Son of Man is a self-portrait by Belgian surrealist René Magritte that was painted in 1964. In this painting an inexplicable green apple hovers before the subject's face, blocking his features from view. The artist intends to convey that everything we see hides some other thing, yet we still want to see what is hidden by what we see. I chose this painting because this painting tells us that each person has hidden depths, while appearing perfectly ordinary on the outside, each one of us has secrets and problems that we don't share going through our daily life.

Analysis: Line - The original son of man utilised basic line structure. René Magritte used the element of line to create the man within the painting.

Colour - Magritte uses a dominance of cool colours, such as grays and blues, creating a depressing scene. Emphasis - The contrast of red and green is apparent in the man's tie and the apple, which make them the centre of attention.

The space in the background draws attention to the man and the apple. Asymmetrical balance - The painting appears almost symmetrical at first glance, but if we look closely we notice some slight differences between the two halves.

by Manalisa Narzary, Class 10.

The Ninth Wave by Ivan Aivazovsky

REPAINTED IN COMPLEMENTARY COLOURS

Painted in 1850. I chose the artwork 'The Ninth Wave' by Ivan Aivazovsky because of its ability to describe the situation like a beautiful piece of music with smooth strokes of oil paint on a canvas. The title of the painting refers to an old sailing expression that the ninth wave is the last, largest and most deadly wave in a series, at which point the cycle begins again.

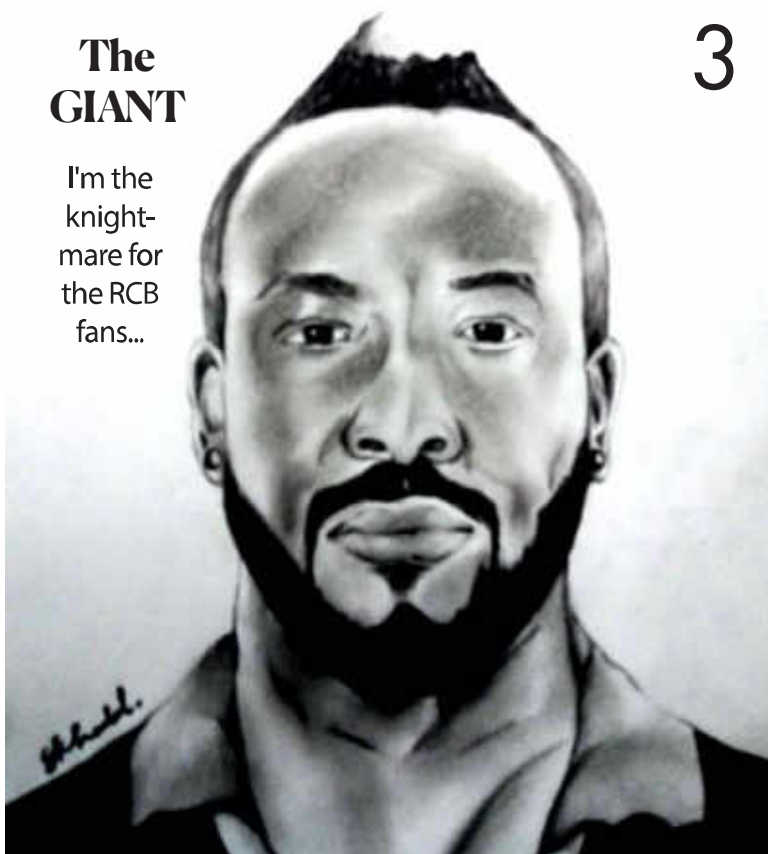
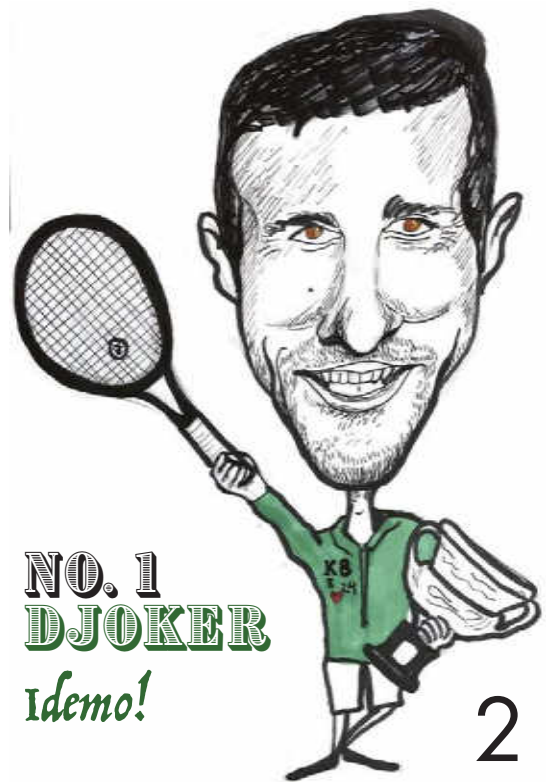
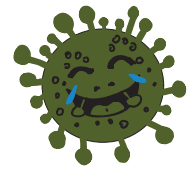
According to my analysis, this painting is in analogous colour scheme, in warm colours of the sun. The waves in the painting are dynamic due to the diagonal movement of the sea waves. The painting has two almost equal parts; the calm yet expressive dawn sky and the dangerous, howling sea. Geometric shapes have been used in this painting for the ship wreck and to figure out the clinging humans.

by Saifi Raheek, Class 10.



GUESS KARO NA !

NEVER GIVE UP! FIGHT KARO NA TILL THE END!



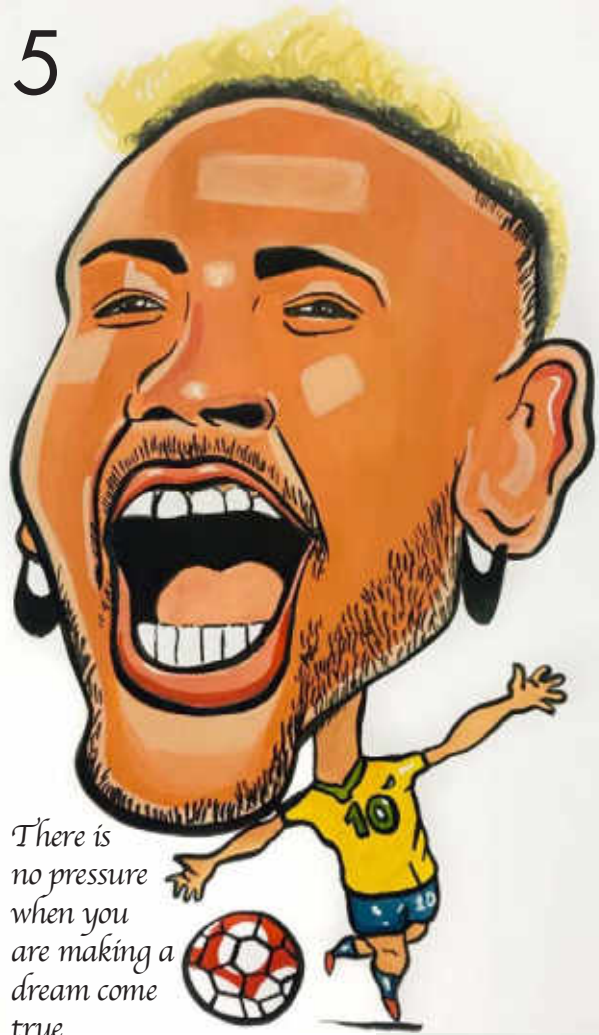
ARTWORKS BY

Top to bottom, L to R: 1) Tanisha Bhadra, Class 11. 2) Anushcka Joshi, Class 11. 3) & 4) Sourav Khodal, Class 11.

Next Page:

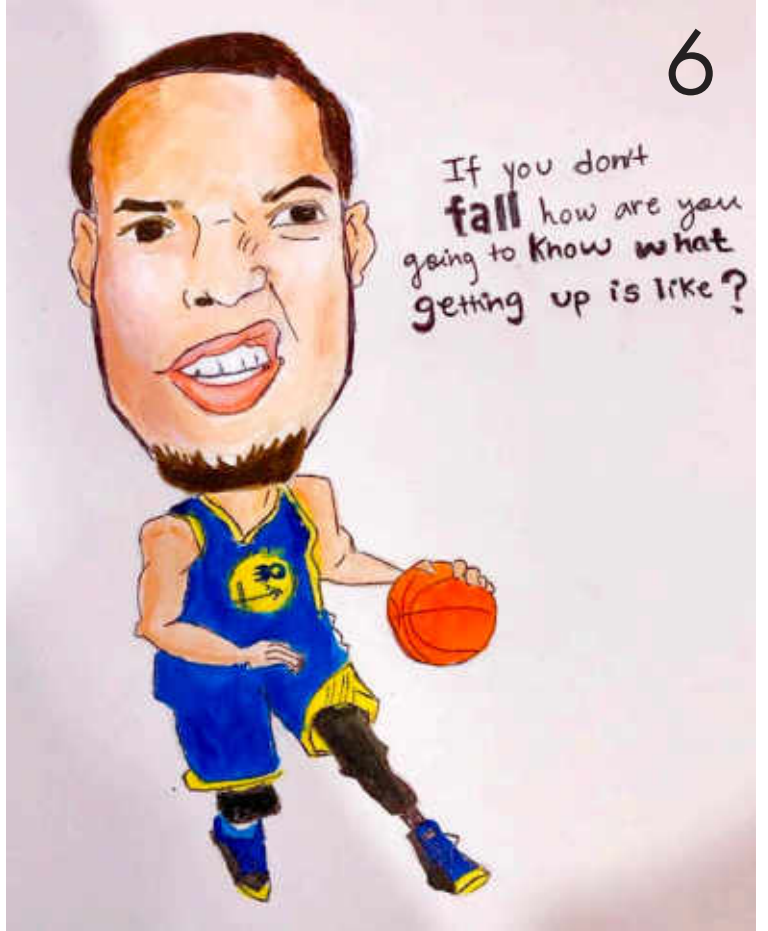
Top to bottom, L to R: 5) Nilasha Bhimsaria, Class 11. 6) Manalisa Narzary, Class 10. 7) Barishta Gogoi, Class 11. 8) Sourav Khodal, Class 11. 9) Saifi Raheek, Class 10. 10) Adrija Das, Class 11.

5



There is no pressure when you are making a dream come true

6



If you don't fall how are you going to know what getting up is like?

9



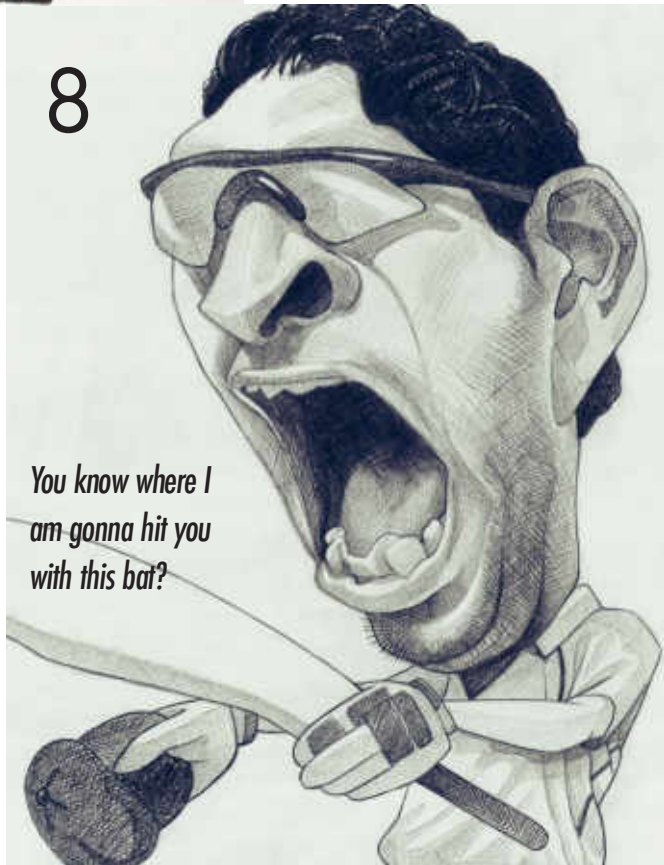
Hard work beats talent when talent fails to work hard

7



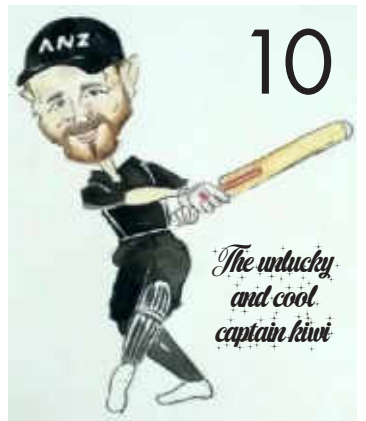
I am the best footballer!

8



You know where I am gonna hit you with this bat?

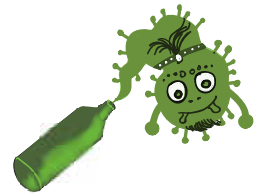
10



The unlucky and cool captain kiwi

See answers on next page

Design!



Sliding Trolley bags

IDENTIFY KARO NA



The sliding **glass door opener** is an innovative version of a door knob and is hands free. Due to the pandemic that is going on, countless lives are being lost to the coronavirus. Scientists have said that the virus can settle on stationary objects for a maximum of three hours. So the virus spreads to the person who touches these objects within that time. The virus can easily spread through a simple door knob because every person that has to pass through a door needs to come in contact with the door knob. Thus, a hands free door knob is a simple and innovative way to prevent being infected by a contaminated door knob in a hospital or in public spaces.



Compact and convertible table

The **Convercycle** is a bicycle which can convert and expand into a cargo bike to carry up to 60 kg weight. Its powered by using an electronic motor and a removable battery. It takes only 3 seconds to convert and can speed up to 15 mph. The Convercycle was released in August 2019 and the cycle has two different versions; the standard and the electrical version, the standard version costs about USD1364 and the electrical version costs about USD 1990.



Top to bottom :

Design Case Studies by: Rishita Choudhury, Class 8. Kedimen Jamir, Class 10. Aditya Gargo, Class 7. Nuhang Chamling, Class 8. Coronicon by Anushcka Joshi.



GUESS KARO NA ANSWERS

Pg 8: 1) Serena Williams, 2) Novak Djokovic, 3) Andre Russel, 4) Chris Gayle.

Pg 9: 5) Neymar Jr, 6) Stephen Curry, 7) Cristiano Ronaldo, 8) Yuvraj Singh, 9) Kevin Durant, 10) Kane Williamson.

Produced by
Craft Design
& Technology
Centre

The creatives printed are the students' ideation and may not necessarily reflect the views of The Assam Valley School . Visualized and designed by: Anushcka Joshi . Published by: The Headmaster, The Assam Valley School . Faculty Advisor: Priyanka Joshi . Online edition at: www.assamvalleyschool.com . Email to: orchid@assamvalleyschool.com